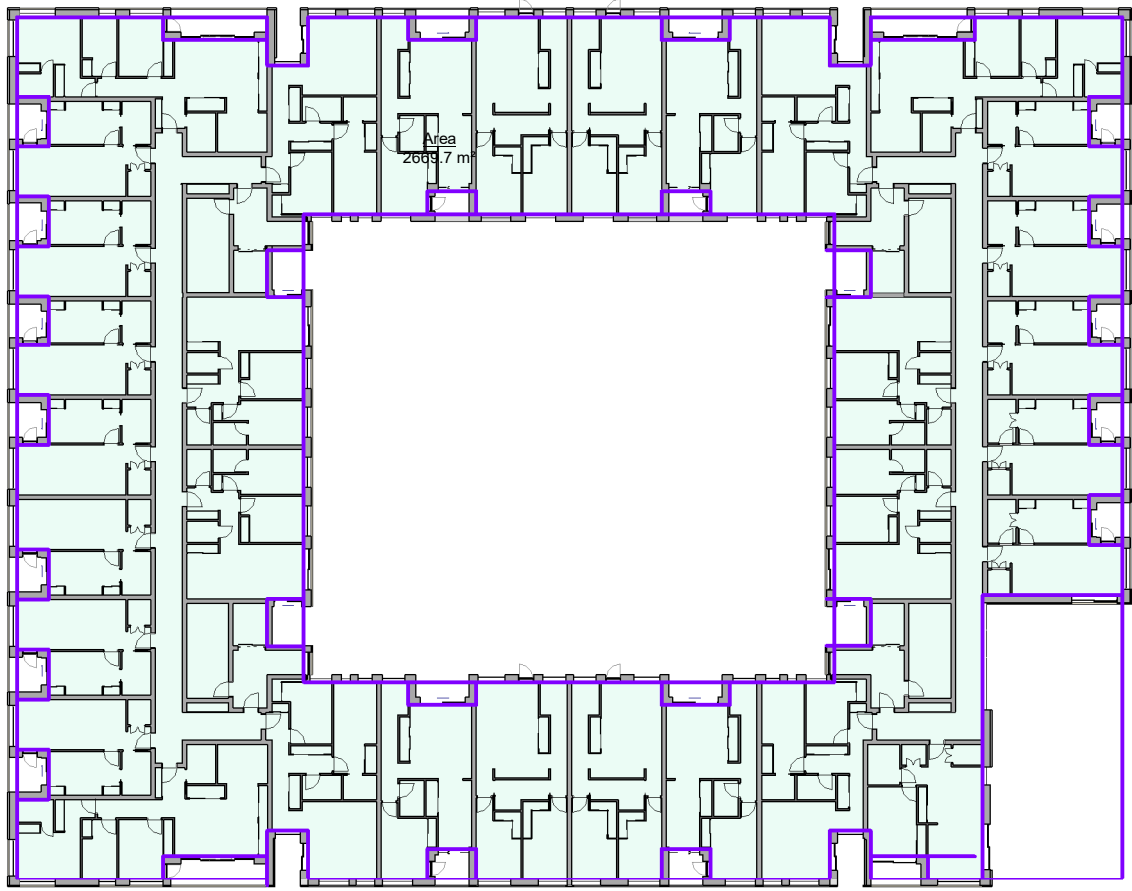
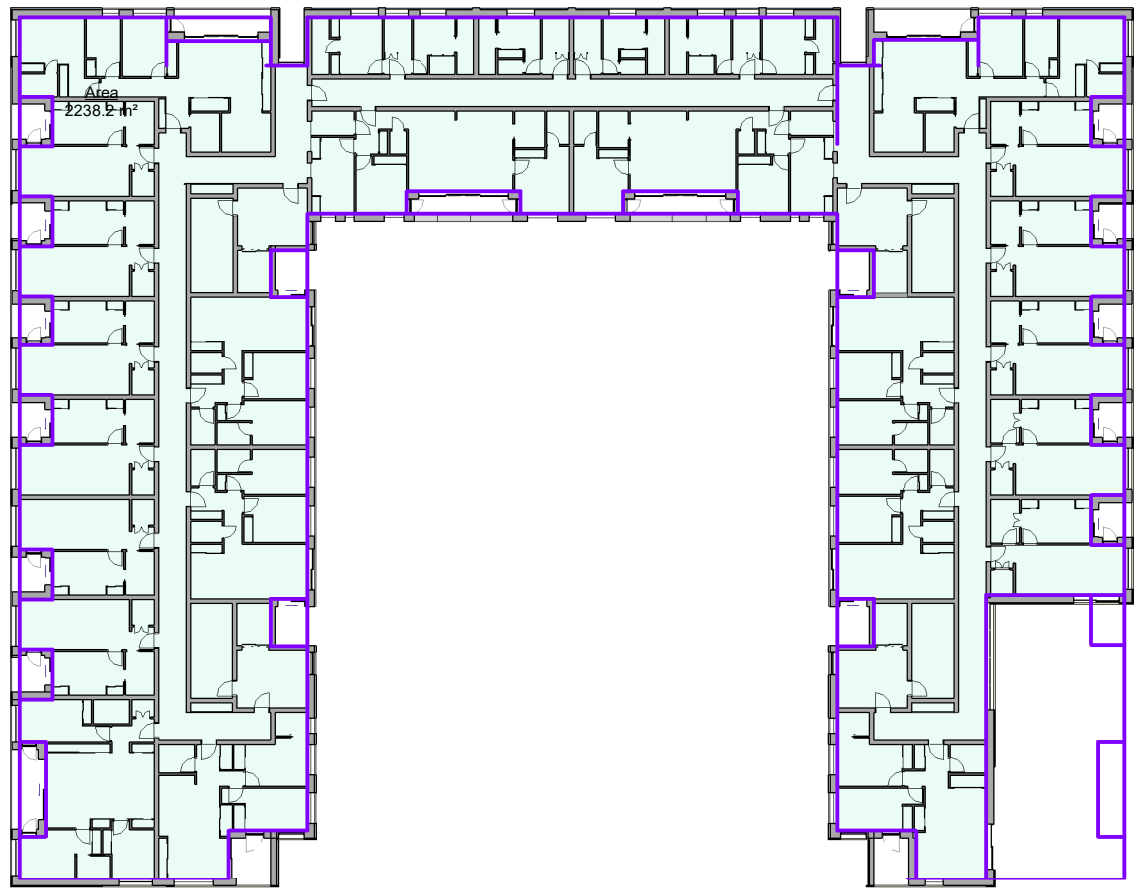


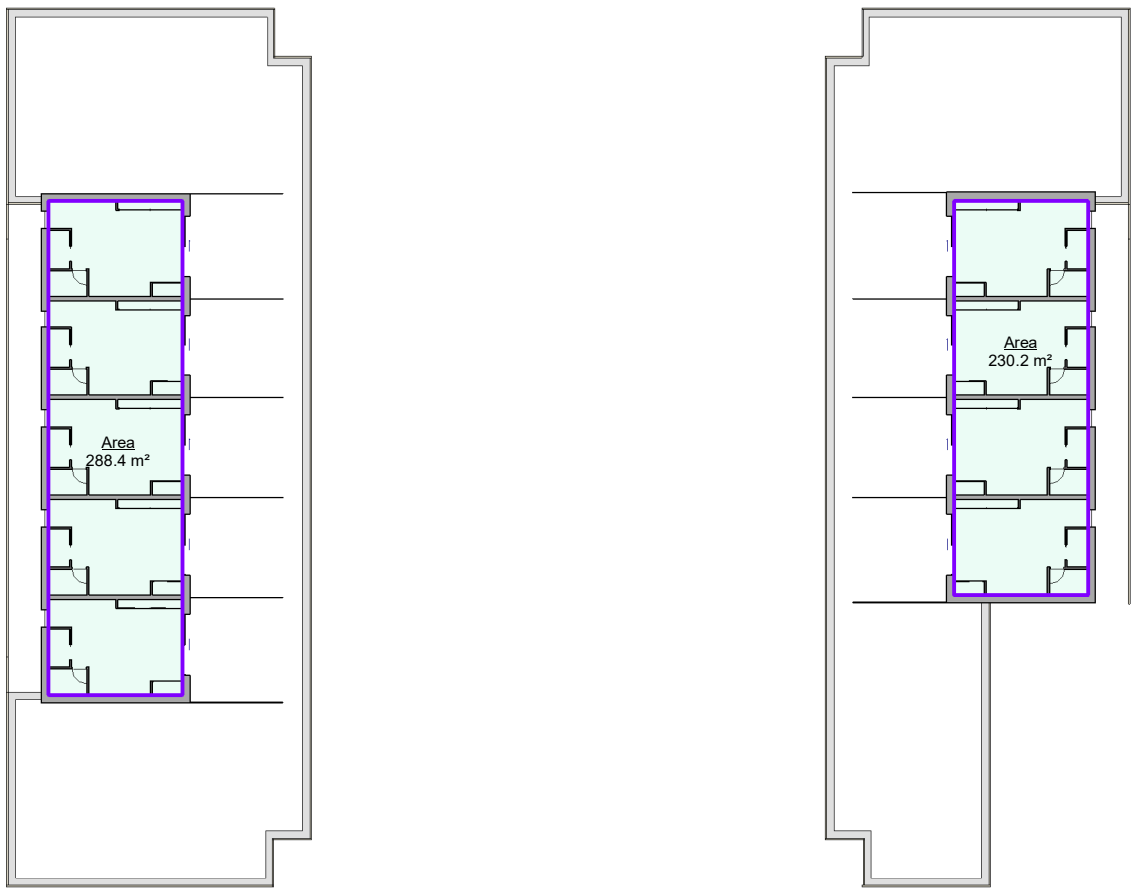
1 Basement Level
1 : 500



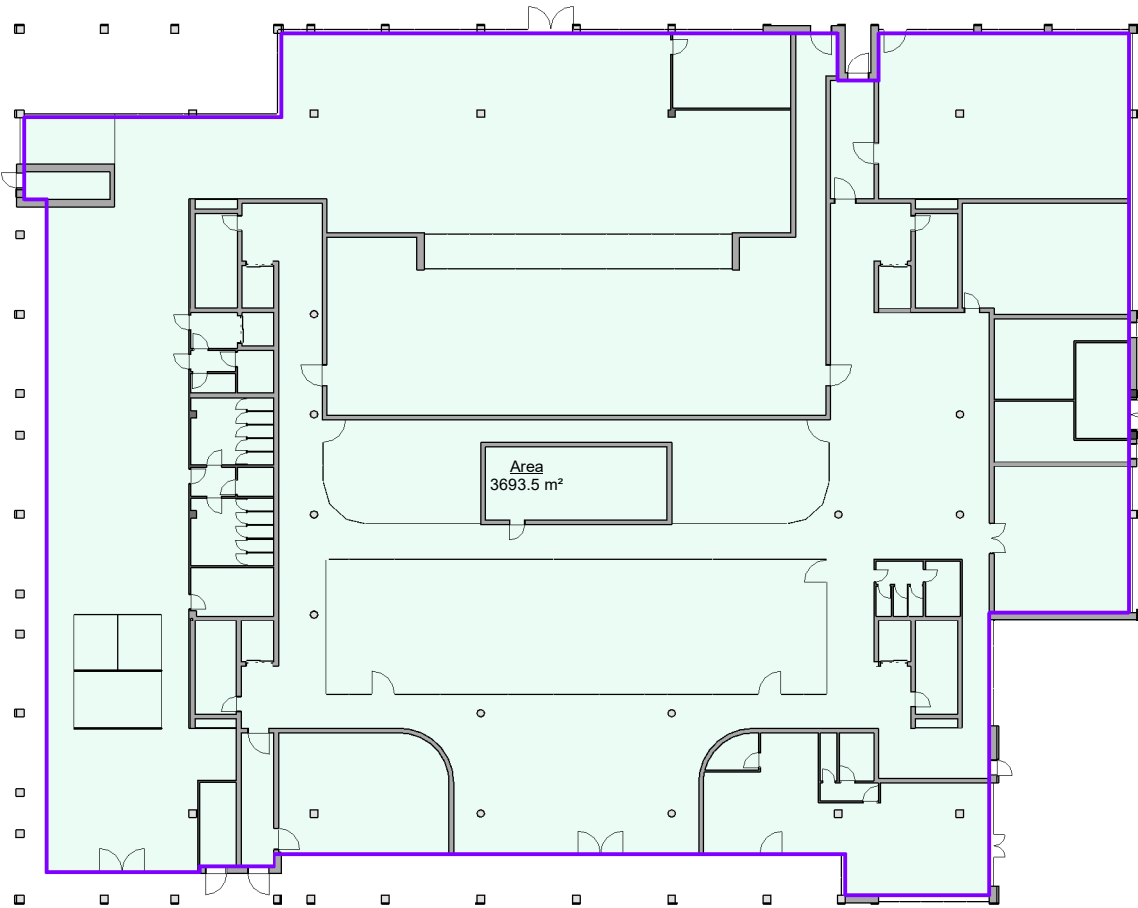
4 Second Floor Level
1 : 500



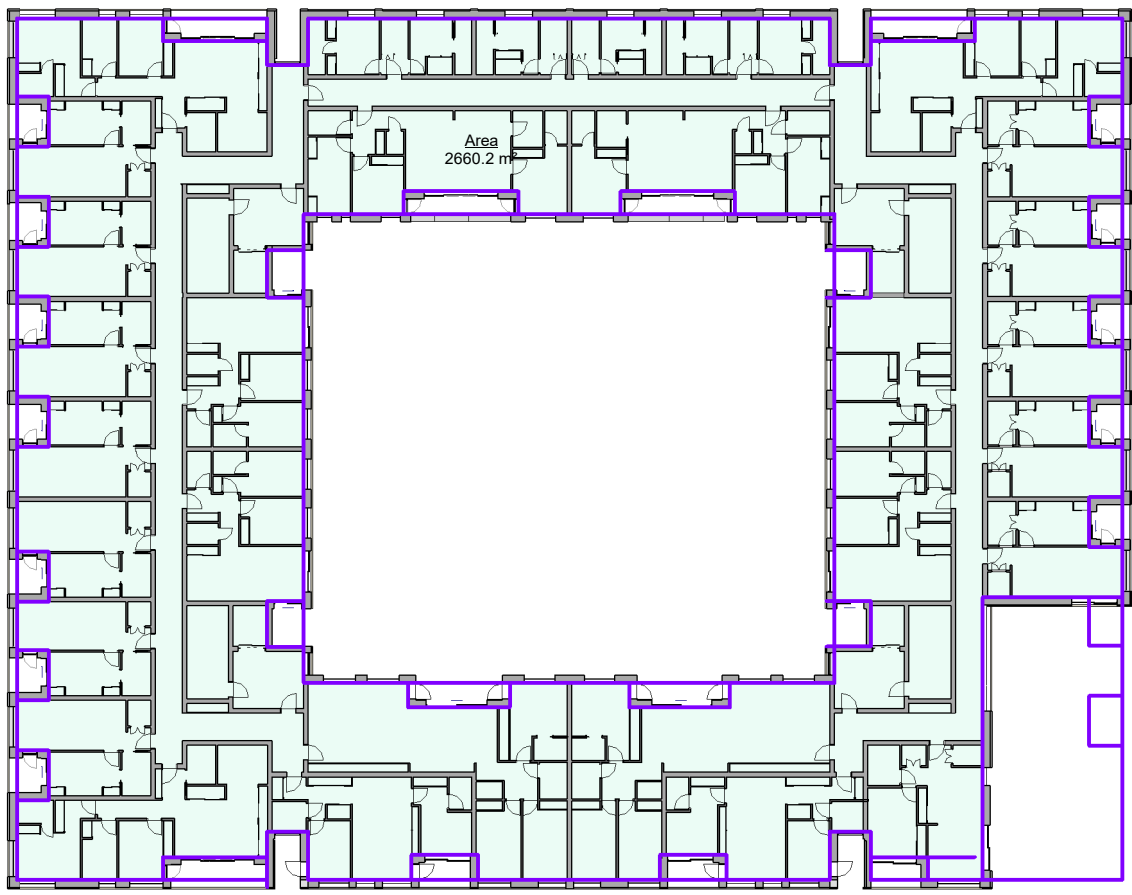
7 Fifth Floor Level
1 : 500



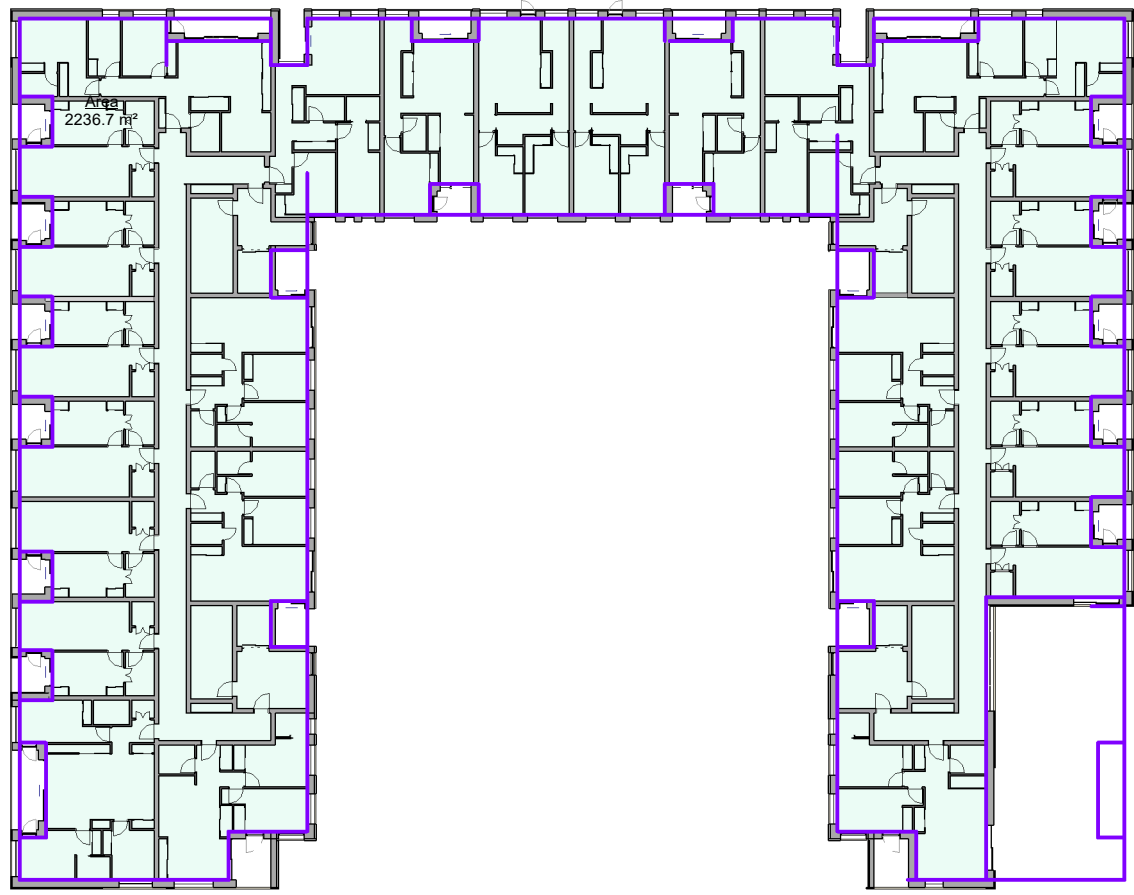
10 Eighth Floor Level
1 : 500



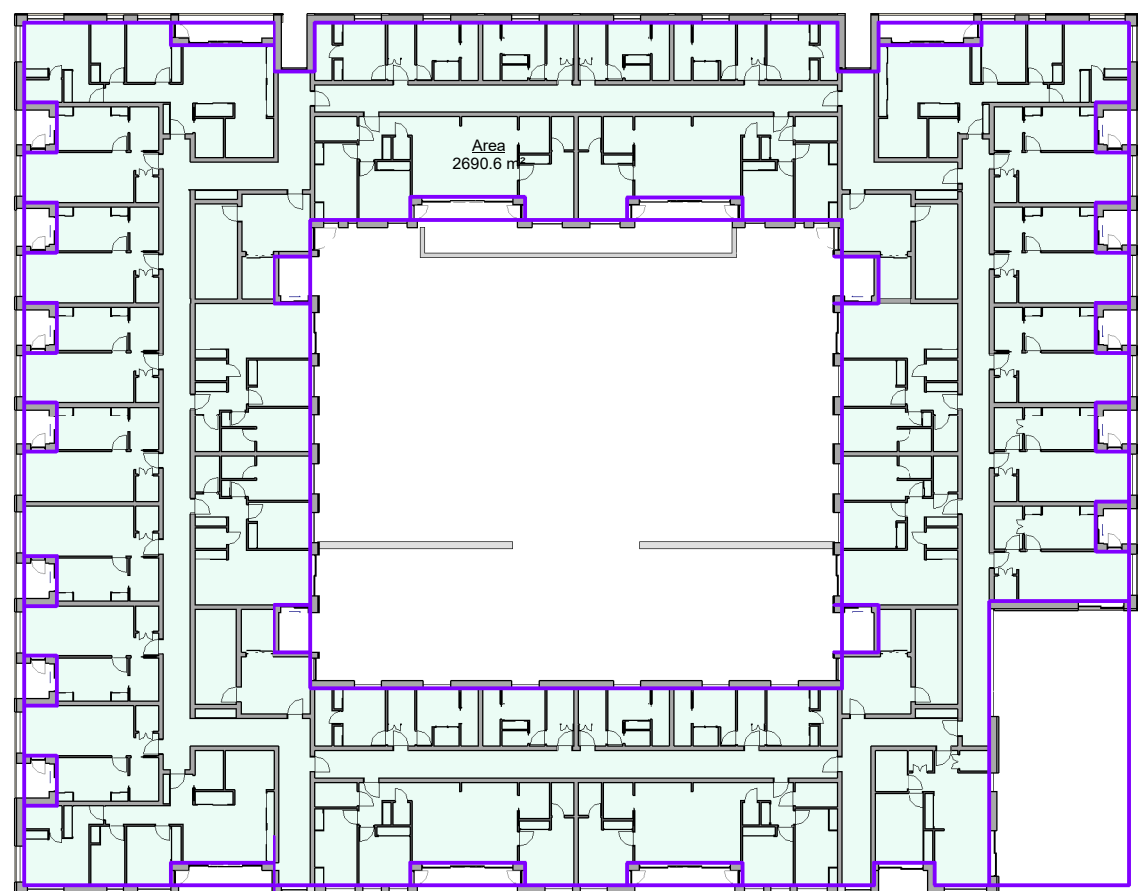
2 Ground Floor Level
1 : 500



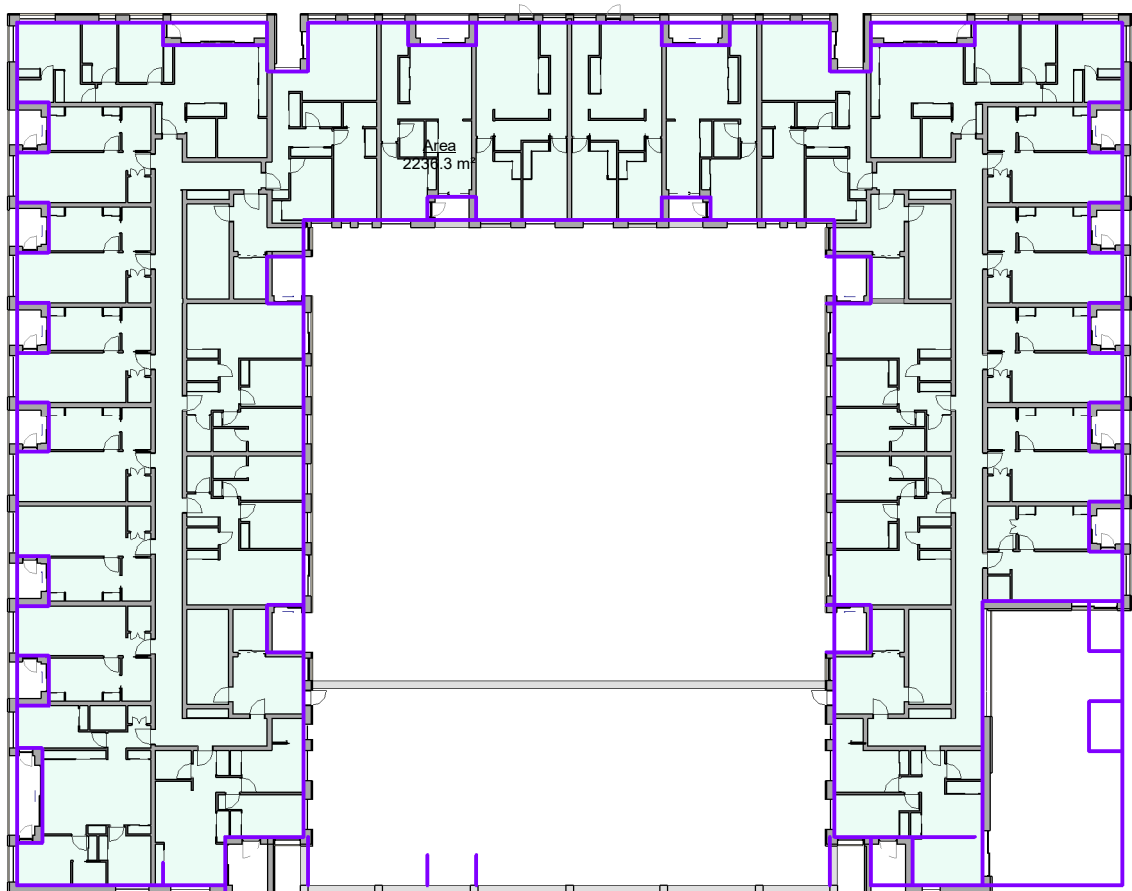
5 Third Floor Level
1 : 500



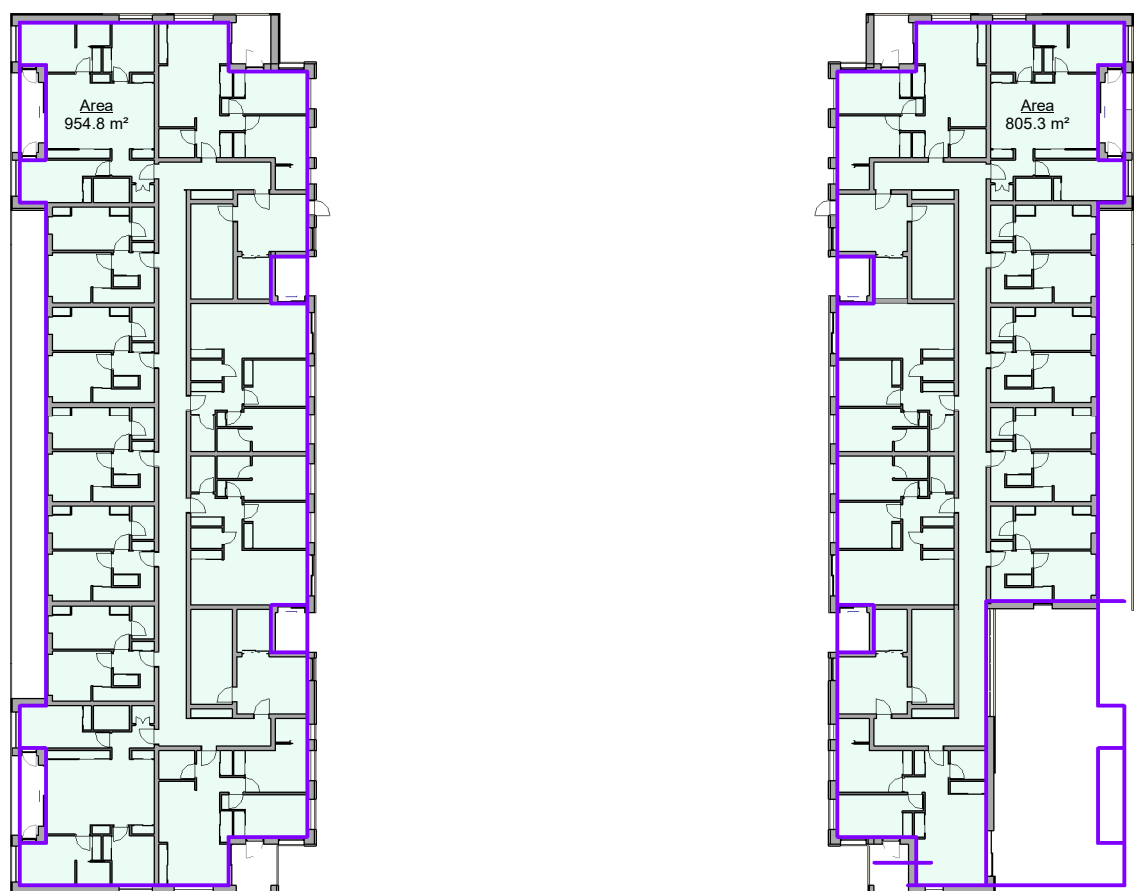
8 Sixth Floor Level
1 : 500



3 First Floor Level
1 : 500



6 Fourth Floor Level
1 : 500



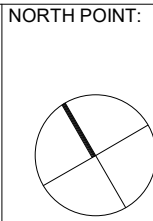
9 Seventh Floor Level
1 : 500

GIA

Floor Area

GIA	
Level	Area
Basement Level	4,805.3 m²
Ground Floor Level	3,693.5 m²
First Floor Level	2,690.6 m²
Second Floor Level	2,669.7 m²
Third Floor Level	2,660.2 m²
Fourth Floor Level	2,236.3 m²
Fifth Floor Level	2,238.2 m²
Sixth Floor Level	2,236.7 m²
Seventh Floor Level	1,760.1 m²
Eighth Floor Level	518.7 m²
25,509.3 m²	

NOTES:	REV.	DATE:	DETAILS:	INITIALS:
Copyright of this drawing is vested in the Architect and it must not be copied or reproduced without consent. Figure dimensions only are to be taken from this drawing. All contractors must visit site and be responsible for setting and checking all dimensions relative their work. PLUS Architecture are to be advised of any variation between drawings and site conditions. DO NOT SCALE OFF THIS DRAWING. — P+R 000001.dwg				



KEY PLAN:

++ PLUSARCHITECTURE PROJECT: 487 CLIENT: Walls Construction Ltd TITLE: GIA ISSUE TYPE: Planning			PROJECT: 487 DRAWING NO.: 487_24_02 DRAWN BY: Author CHECKED BY: Checker	DATE: 06/11/21 REVISION NO.: A SCALE AT A1.: 1 : 500 SCALE AT A3.:
--	--	--	---	---